

FISHWAY STATUS REPORT

Date: 06/10/12
Inspection Period: 06/3-9/2012

THE DALLES DAM



**US Army Corps
of Engineers**
Portland District

The Dalles Project-Fisheries
P.O. Box 564
The Dalles, OR 97058-9998
Phone: 541-506-3800

Fishways are inspected twice daily. Additional daily monitoring done via automation system in fisheries office.

The Dalles Dam	Inspections	Criteria	Total Number of Inspections: 21		Temperature: 57.4 F
	Out of Criteria	Limit	Comments		Secchi: 3.4 Ft.
NORTH FISHWAY					
Exit differential	0	≤ 0.5'			
Count station differential	0	≤ 0.3'			
Weir crest depth	0	1.0' ± 0.1'			
Entrance differential	0	1.0' - 2.0'	Average 1.4	Daily differentials & weir depths, see AVGS tab.	
Entrance weir N1	0	depth (≥ 8')	Average 10.1		
Entrance weir N2		Closed	Bulkhead installed		
PUD Intake differential	0	≤ 0.5'	Trash rack raked on		
EAST FISHWAY					
Exit differential	0	≤ 0.5'			
Removable weirs 154-157	0	Per forebay	Auto adjusts 1' increments.		
Weir 158-159 differential	0	1.0' ± 0.1'			
Count station differential	0	≤ 0.3'			
Weir crest depth	0	1.0' ± 0.1'	Weir depth was adjusted to 1.3' for shad passage on 6/4/12.		
Junction pool weir JP6	0	depth (≥ 7')	Manually adjusted as needed.		
East entrance differential	0	1.0' - 2.0'	Average 1.6	Daily differentials & weir depths, see AVGS tab.	
Entrance weir E1	0	No criteria	Average 7.6	Manually adjusted.	
Entrance weir E2	0	depth (≥ 8')	Average 10.2		
Entrance weir E3	0	depth (≥ 8')	Average 10.1		
Collection channel velocity	N/A	1.5 - 4 fps	Average N/A	See Velocities tab for more complete information.	
Transportation channel velocity	N/A	1.5 - 4 fps	Average N/A		
North channel velocity	N/A	1.5 - 4 fps	Average N/A		
South channel velocity	N/A	1.5 - 4 fps	Average N/A		
West entrance differential	0	1.0' - 2.0'	Average 1.6		
Entrance weir W1	0	depth (≥ 8')	Average 9.1		
Entrance weir W2	0	depth (≥ 8')	Average 9.1		
Entrance weir W3	0	No criteria	Average Closed		
South entrance differential	0	1.0' - 2.0'	Average 1.6	Daily differentials & weir depths, see AVGS tab.	
Entrance weir S1	0	depth (≥ 8')	Average 8.7	Manually adjusted.	
Entrance weir S2	0	depth (≥ 8')	Average 8.6		
JUVENILE PASSAGE					
Sluiceway operation	0	units 1,8,18			
Turbine trashrack drawdown	0	<1.5', wkly			
Spill volume	5	40%, 24hr	Average 44.8	Spill volume has been determined by the spill level set by the Reservoir Control Center.	
Spill Pattern	0	per FPP			
Turbine Unit Priority	0	per FPP			
Turbine 1% Efficiency	0	per FPP			

OTHER ISSUES:**THE DALLES**

Birds: Small to moderate numbers of gulls foraging downstream of The Dalles 197 bridge.

See bird tab below for more information on species, location and numbers.

USDA gull hazers on site 8hrs/day, 7 days/week. Hazing to increase to 14hrs/day when administrative logistics completed.

Sea Lions: With unofficial reports of up to 4 sea lions downstream of The Dalles, observation efforts will increase. Fisheries staff has documented 12 sightings since Jan 4. Some sightings have been close to fishway entrances. No sightings have been made of sea lions inside fishways to date. Sea lion observation plan includes Fisheries Field Unit standardized observations several times weekly and project fisheries staff spot checks daily. Efforts will be made to identify individual sea lions and fish take. Data will be reported in the weekly fishway status and the annual report. Furthermore, correspondence is in progress ODFW for potential trapping efforts, pending funding and necessary approvals.

Operations:

Calibration check completed Jun 6.

Gatewell drawdown was not completed this week.

Spill volume ranged between levels 1 - 3 as set by Reservoir Control Center.

Maintenance:

S1 weir was replaced with spare weir last winter due to structural issues. Work will begin for rehab original S1 weir to serve as a spare.

Small projects team working on plans/specs for rehab or replacement of east exit weirs 154-159. Work will depend on funding. Spare wheels will be made and kept on hand in the meantime.

Studies:

Supporting PIT study team as needed. 90% draft in progress. Reviewing weir and count stations alternatives. Investigating potential locations for equipment room. Team site visit Jun 13.

Supporting EFL backup water study as needed. Fishlock valves selected as baseline source of 400cfs. Deep intake selected as additional 1000cfs. Potential of Fishlock valve rehab before the remaining construction. Exploring project maintenance removal of fishlock gear boxes.

Research/Contractors:

ODFW bass diet sampling crew continuing dam angling. Catch rates moderate. Generally fewer and larger bass caught at The Dalles.

WDFW pikeminnow removal dam angling continuing. Catch for Jun 4-Jun10 was 340. Catch year to date 521. No salmonid by catch.

WDFW fish counters continuing 16 hr/day counting. Large numbers of shad in east ladder. Very few shad using north.

YIN sturgeon broodstock fishing from culde sac originally planned for early June, now uncertain. Awaiting more info from POC.

Tribal lamprey trapping. No planning meetings to date. Access issues inside count station picket leads resolved.

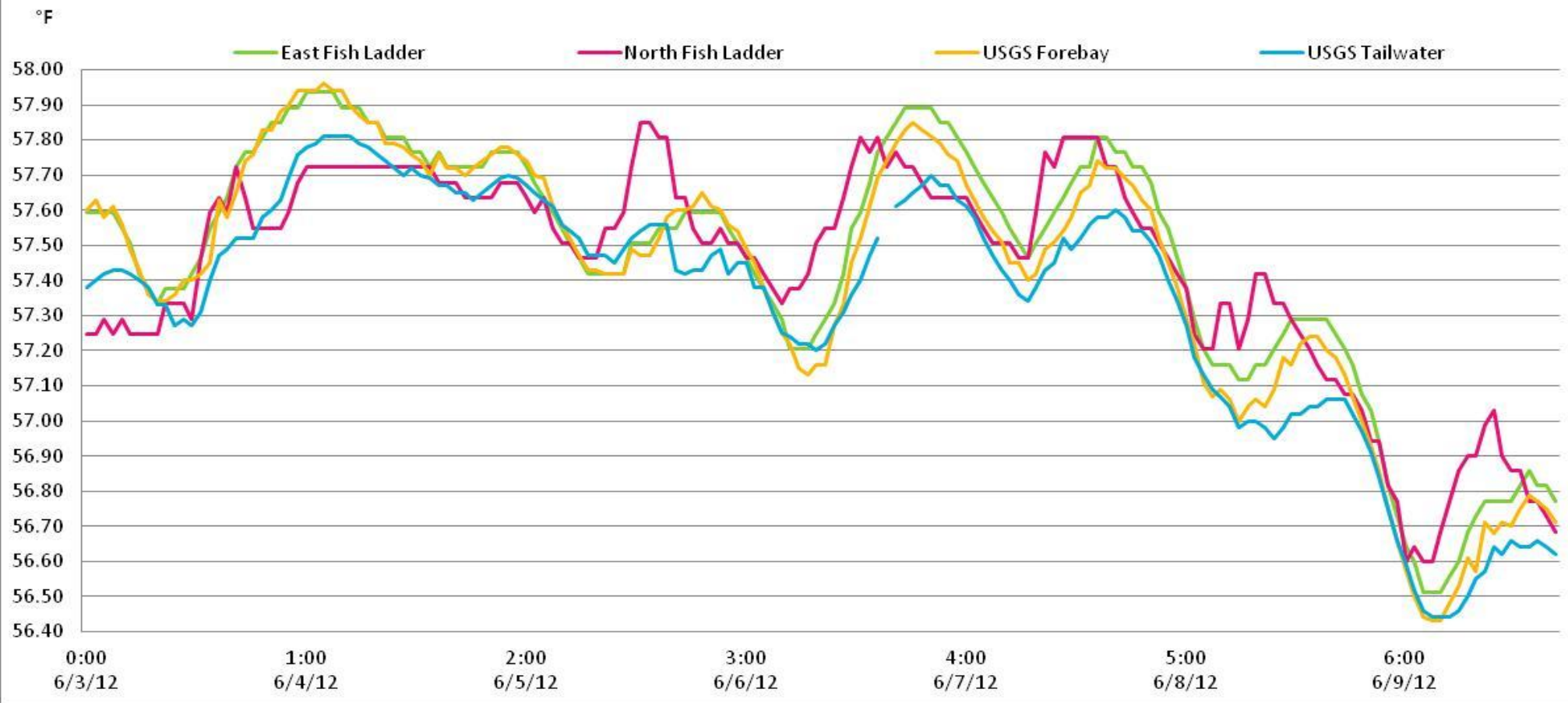
Approved by;
Ron D. Twiner
Operation Project Manager
The Dalles Dam

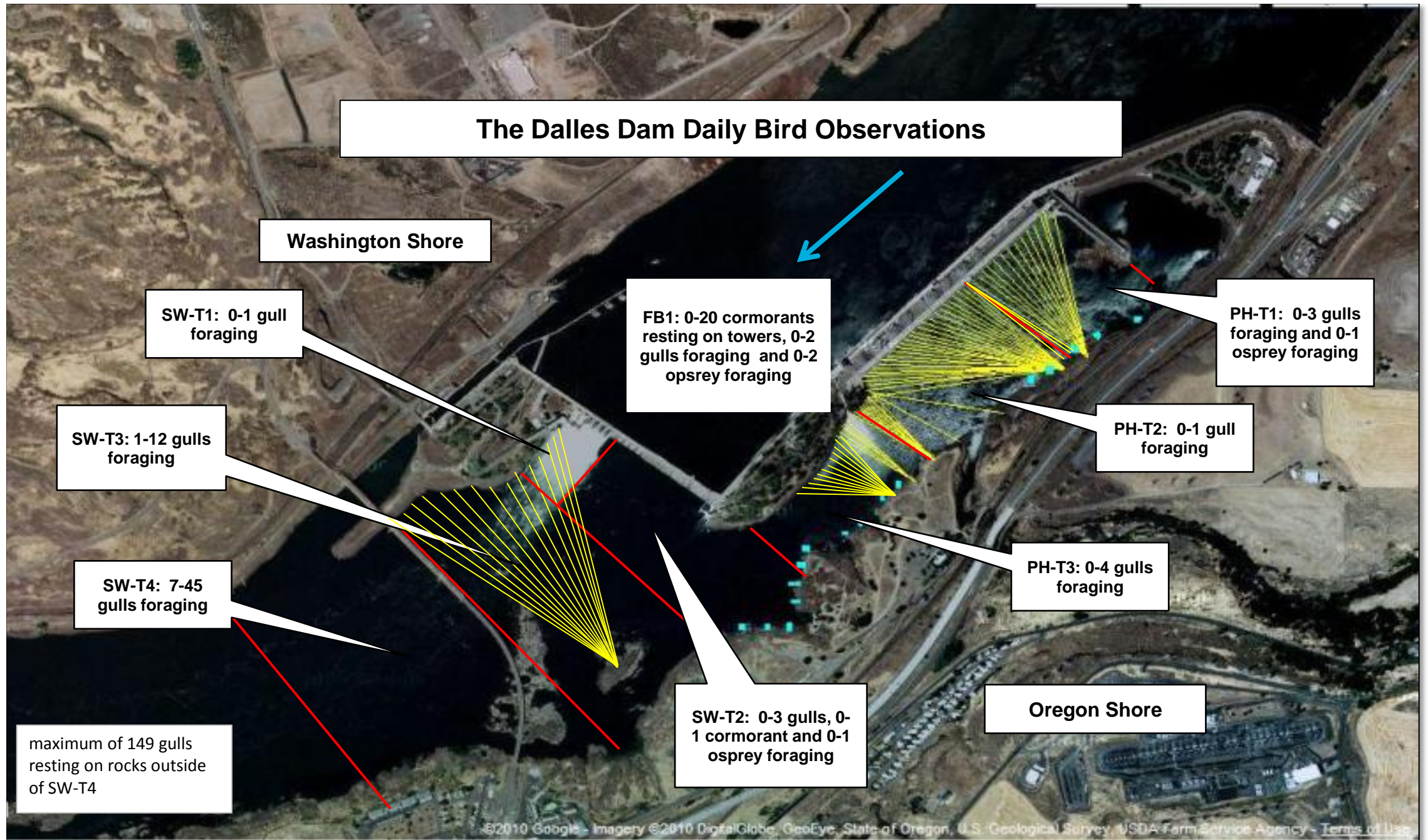
The Dalles Dam Fish Counts

Date	East	North	East	North	Total	Total	East	North					East	North						
	Chinook	Chinook	Chinook	Chinook	East	North	Unclipped	Unclipped	East	North	East	North	Coho	Coho	East	North	East	North	Spill	
	Adult	Adult	Jack	Jack	Sthd	Sthd	Sthd	Sthd	Sock	Sock	Coho	Coho	Jack	Jack	Lamprey	Lamprey	Pink	Pink	Volume	
3-Jun	662	971	114	8	21	2	2	0	92	0	0	0	0	0	0	0	0	0	0	271.0
4-Jun	1298	598	131	4	25	1	6	0	139	0	0	0	0	0	0	0	0	0	0	285.0
5-Jun	1354	812	120	13	15	2	2	0	223	1	0	0	0	0	0	0	0	0	0	281.1
6-Jun	946	68	89	0	31	0	1	0	220	0	0	0	0	0	0	0	0	0	0	324.0
7-Jun	1120	264	136	0	33	1	5	1	322	0	0	0	0	0	0	0	0	0	0	333.1
8-Jun	914	444	127	4	13	0	1	0	356	0	0	0	0	0	0	0	0	0	0	332.7
9-Jun	913	64	134	0	32	0	6	0	461	0	0	0	0	0	0	0	0	0	0	329.3
Wkly Tot	7207	3221	851	29	170	6	23	1	1813	1	0	0	0	0	0	0	0	0	0	308.0
% Split	69.1%	30.9%	96.7%	3.3%	96.6%	3.4%	95.8%	4.2%	99.9%	0.1%	#DIV/0!	#DIV/0!	#DIV/0!	#DIV/0!	#DIV/0!	#DIV/0!	#DIV/0!	#DIV/0!	#DIV/0!	

Spill range: 39.3% - 46.4%

The Dalles River/Water Temperatures





USDA hazing primarily downstream of Hwy 197 bridge.

Temp:		Secchi:	
	57.5	SUN	3.5
	57.8	MON	3.5
	57.6	TUES	3.5
	57.5	WED	4.0
	57.6	THUR	3.0
	57.2	FRI	3.0
	56.7	SAT	3.5
AVG:	57.4	AVG:	3.4

The Dalles Dam Daily Readings and Averages for
Temperatures, Secchi, Entrances, and Spill

North Fish Ladder			East Fish Ladder												
North Entrance			East Entrance					West Entrance				South Entrance			
Date:	Differential	N1 Depth	Differential	E1Depth	E2 Depth	E3 Depth	JP 6	Differential	W1Depth	W2 Depth	W3 Depth	Differential	S1 Depth	S2 Depth	% Spill
6/3/12	1.4	10.1	1.6	6.0	10.0	10.0	9.6	1.7	8.9	8.9		1.4	8.3	8.3	
6/3/12	1.4	10.3	1.5	6.1	10.0	9.9	9.3	1.7	9.0	8.9		1.6	8.3	8.2	
6/3/12			1.6	6.0	9.9	10.0		1.7	8.9	8.9		1.3	8.4	8.3	39.8
6/4/12	1.4	10.1	1.5	6.1	10.1	10.0	9.4	1.5	8.9	9.0		1.5	8.2	8.2	40.8
6/4/12	1.4	10.1	1.5	6.1	10.1	10.1	9.6	1.6	8.9	9.0		1.5	8.2	8.2	
6/4/12			1.6	6.1	10.1	10.0		1.5	9.1	9.0		1.4	8.4	8.4	40.0
6/5/12	1.4	10.1	1.7	6.0	10.0	10.0	9.6	1.5	9.1	9.1		1.4	8.4	8.3	40.0
6/5/12	1.4	10.2	1.7	8.0	10.0	10.0	9.8	1.6	9.0	9.0		1.4	8.3	8.2	
6/5/12			1.6	6.0	10.1	10.1		1.5	9.0	9.0		1.3	8.4	8.3	40.0
6/6/12	1.5	10.0	1.4	5.1	10.0	10.1	8.3	1.6	8.9	9.0		1.3	8.3	8.3	40.1
6/6/12	1.5	10.1	1.7	5.0	10.0	10.0	10.5	1.6	9.1	9.0		1.5	11.6	11.5	
6/6/12			1.7	5.0	10.0	10.0		1.8	9.2	9.1		1.5	8.3	8.4	55.8
6/7/12	1.4	10.2	1.5	10.0	10.0	9.9	13.2	1.5	9.0	8.9		1.6	8.9	9.0	41.2
6/7/12	1.5	10.1	1.6	5.4	10.5	10.5	11	1.5	10.0	9.9		1.5	8.9	9.0	
6/7/12			1.7	10.0	9.9	9.9		1.5	9.0	8.9		1.5	8.9	9.0	38.7
6/8/12	1.4	10.1	1.5	10.1	10.0	10.0	11.5	1.6	9.1	9.1		1.5	8.6	8.6	41.4
6/8/12	1.4	10.1	1.7	10.1	10.0	10.1	11.3	1.5	9.1	9.2		1.4	8.6	8.6	
6/8/12			1.4	10.6	10.5	10.5		1.1	9.4	9.4		1.4	8.9	8.9	35.7
6/9/12	1.5	10.2	1.5	10.9	10.7	10.7	11.6	1.6	9.6	9.5		1.5	8.7	8.7	45.0
6/9/12	1.5	10.1	1.5	10.8	10.8	10.8	11.5	1.6	9.3	9.4		1.5	8.6	8.5	
6/9/12			1.7	10.7	10.8	9.3		1.6	9.1	9.3		1.6	8.6	8.6	45.5
AVG:	1.4	10.1	1.6	7.6	10.2	10.1	10.4	1.6	9.1	9.1	Closed	1.5	8.7	8.6	44.8

Third fish way inspection for east fish ladder, east, west, and south entrances completed via automation system in fisheries office.